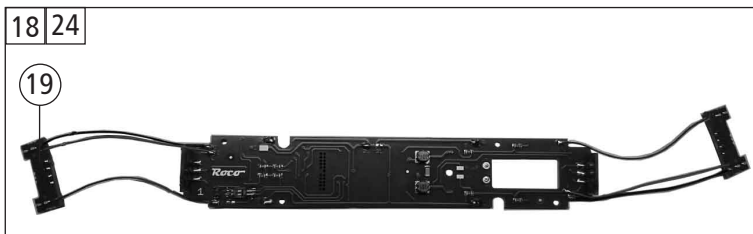
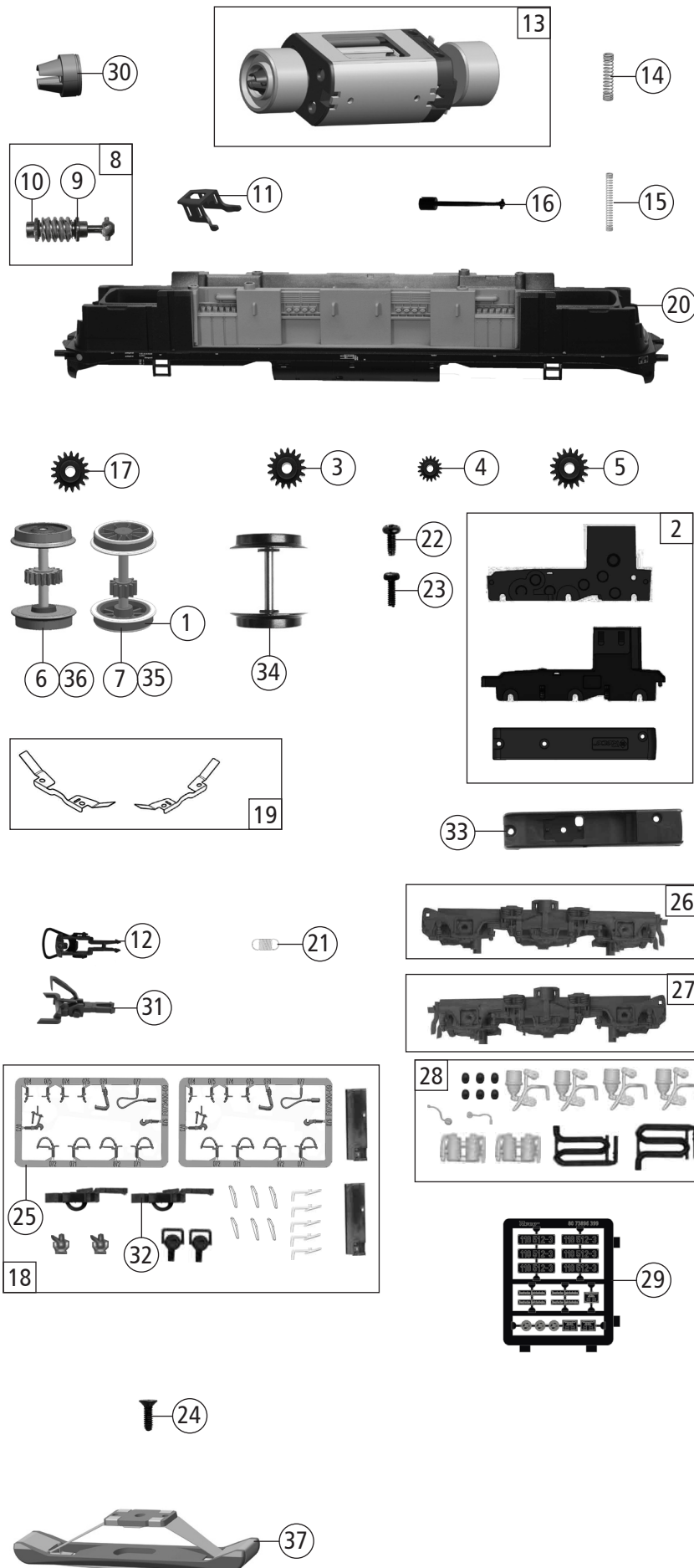


Pos. Nr. Pos.no.	Beschreibung Description	Art.-Nr. Art.no.	Preisgruppe Price bracket
1	Gehäuse kpl. Betr. Nr. 118 512-3 Body ass. compl. Loco no. 118 512-3	147172	37
2	TS - Fenster Part set windows	144853	12
3	Linse rot Lenses red	142463	5
4	TS - Scheinwerfer+Lichtleiter Part set - headlight+light conductor	142464	11
5	TS - Deichsel Part set - rod	142465	9
6	TS - Auspuff Part set - exhaust	142959	6
7	TS - Griffe Part set - hand-rail	142467	8
8	TS - Steuerkabel/Leitung Part set - steering cable/wiring	142468	11
9	TS - Wischer+Stirngriffe Part set - wipers+front handles	142469	6
10	Maschinenraumfenster Engine room window	147177	10
11	TS - Führerstand/Lichtabd. Part set - drivers cab/light cover	142484	11
12	TS - Dachlüfter mit Klappe Part set - roof ventilators with hatch	147173	6
13	Puffergriff li. + re. Buffer grip left + right	142474	8
14	Puffer rund gewölbt Buffer curve round	88503	5
15	Lokführer Loco driver	110407	6
16	TS - Stirngriffe lack. Part set - roof hand-rails	142488	14
17	Türgriffstange Door hand-rail	142489	3
18	Platine kpl. m. LED-Platinen Printed circuit ass. w. LED printedcircuit	142482	25
19	Lichtplatine Light PCB	142483	10
20	Brückenstecker - Plux16 Connector - Plux16	133241	10
21	GF-Schraube M1,6x6 mm Self-tapping screw M1,6x6 mm	114836	3
22	GF - Schraube M1,6x4 mm Self-tapping screw M1,6x4	114850	3
23	SK-Schraube M1,6x4 mm SK-Screw M1,6x4 mm	115161	3
Sound			
24	Platine kpl. m. LED-Platinen Printed circuit ass. w. LED printedcircuit	142495	26
25	Sound-Steckdecoder - 22Plux ZIMO Sounddecoder	142964	40
26	Lautsprecher Loud speaker	129524	13





Pos. Nr. Pos.no.	Beschreibung Description	Art.-Nr. Art.no.	Preisgruppe Price bracket
73896	DR Br 118	=	
73897		=	🔊
79897		~	🔊
1	Haftringsatz 10Stk. 10,3-12,8mm Set with traction tyres 10 pieces	40069	---
2	Getriebebesatz 3tlg. Gear bottom 3 parts set	147171	13
3	Schnecken Zahnrad Worm gear	86490	5
4	Zahnrad Z=14 Gear wheel Z=14	111115	3
5	Zahnrad Z=17 Gear wheel Z=17	86418	5
6	Radsatz m. Zahnrad o. Haftring Wheelset w.gear wheel w/o. tract. tyres	142953	11
7	Radsatz mit Zahnrad mit 2 Haftringen Wheelset w. gear wheel w.2 tract.tyres	142954	12
8	Schneckensatz mit Kardankugel Set of worm gear incl.cardan ball	142481	10
9	Beilagscheibe Washer	86108	3
10	Lager für Schneckenachse Bearing for worm gear axle	89749	6
11	Schneckendeckel Worm gear cover	137595	6
12	Standardkupplung Standard coupling	89246	6
13	Motor Motor	136206	28
14	Kontaktfeder D=2,4x11,6 mm Contact spring D=2,4x11,6 mm	116876	3
15	Motorkontaktfeder Motor contact spring	136207	6
16	Kardanwelle Cardan shaft	107738	4
17	Zahnrad Z=23 Gear wheel Z=23	111679	3
18	Zurüstbeutel Bag of accessories	142490	13
19	Radkontakte l+r Wheel contact l+r	142552	10
20	Grundrahmen Main frame	147167	24
21	Zugfeder - 2,5x5,8x0,15mm Spring - 2,5x5,8x0,15mm	86208	3
22	GF-Schraube M2x5 mm Self-tapping screw M2x5 mm	114966	3
23	GF-Schraube M1,6x5 mm Self-tapping screw M1,6x5 mm	115269	3
24	BL - Schraube M2,2x13mm Tapping screw M2,2x13mm	96532	4
25	TS - Bremserschläuche + Zughaken Part set - brake tubes + coupling hooks	139832	7
26	Blende 1 kpl. Blind 1 complete	147168	18
27	Blende 2 kpl. Blind 2 complete	147169	18
28	TS - Blendeteile Part set - blinds	147170	10
29	Tafelsatz Set of panels	147174	12
30	Kardanschale Cardan reception	87129	4
31	Universalkupplung Universal coupling	89282	6
32	Kurzkupplung Short coupling	115550	6
AC - Wechselstrom			
33	Getriebeboden AC Gear bottom AC	147175	8
34	Radsatz o. Haftr. o. Zahnr. AC Wheelset w/o traction tyre w/o gear wheel AC	142506	10
35	Radsatz m. Haftringen m.Zahnrad AC Wheelset w. traction tyres w.gear wheel AC	142507	12
36	Radsatz m. Zahnr. o. Haftr. AC Wheelset w.gear wheel w/o traction tyre AC	142508	11
37	Schleifer 46mm o. Halteklammer Center pick-up 46 mm	86031	14